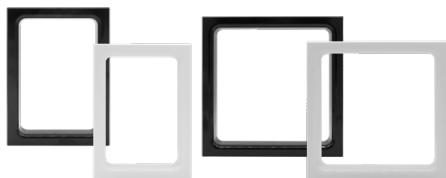
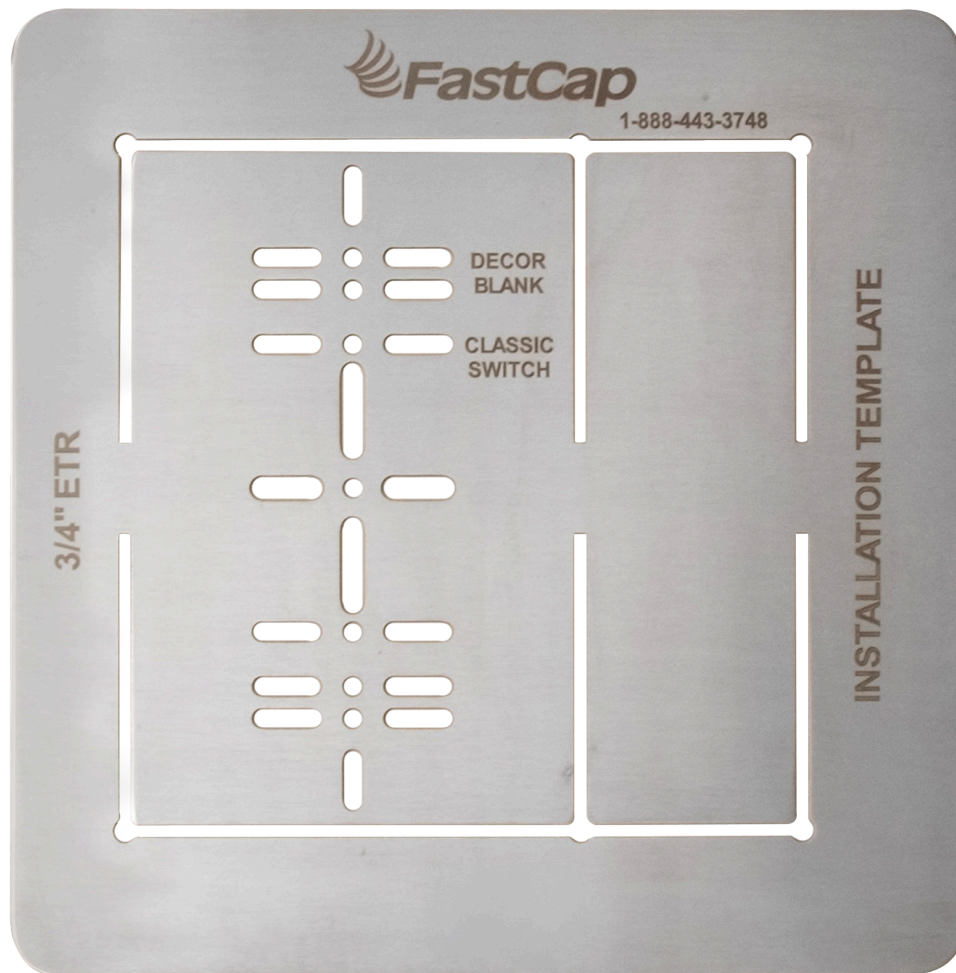


ETR ¾ JIG

INSTRUCTIONS



**ETR ¾ Black & White
Single or Double
Sold Separately**

FastCap, LLC

5016 Pacific Highway
Ferndale, WA 98248

Toll Free: 1-888-443-3748

Phone: 1-360-752-2138

Fax: 1-360-650-1075

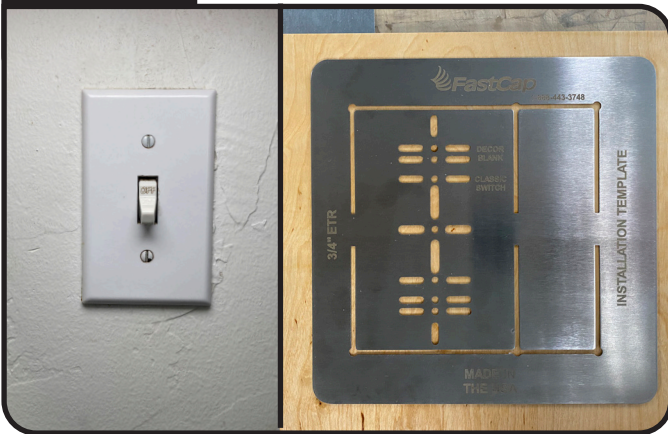
Web: www.fastcap.com

Email: info@fastcap.com

UPDATED: MAY 2025

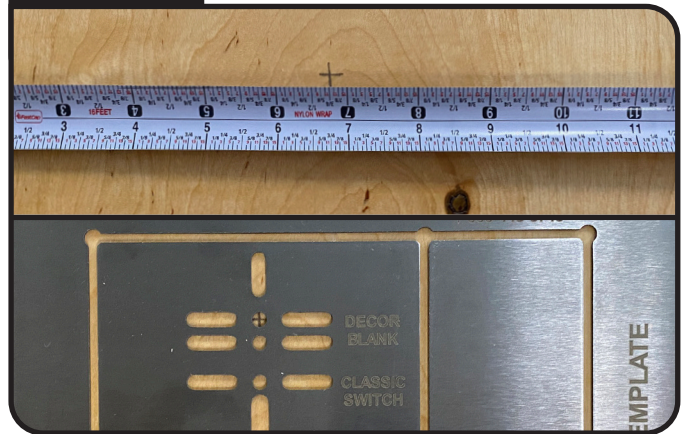
ETR $\frac{3}{4}$ JIG SETUP

STEP 1



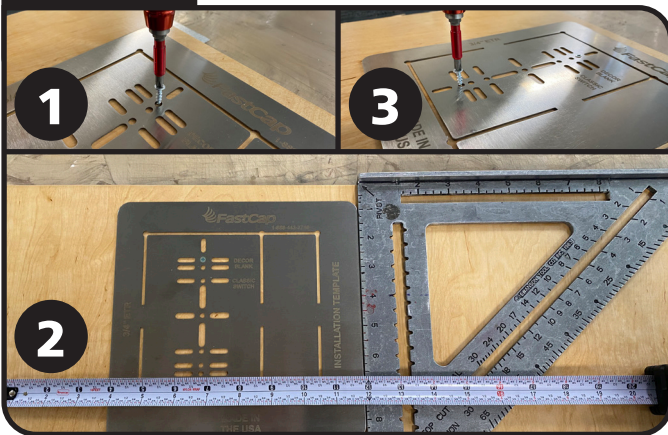
PICK SCREW ON PLATE AND FIND CORRESPONDING HOLE ON ETR $\frac{3}{4}$ JIG

STEP 2



MEASURE AND MARK HOLE LOCATION AND ALIGN SCREW HOLE

STEP 3



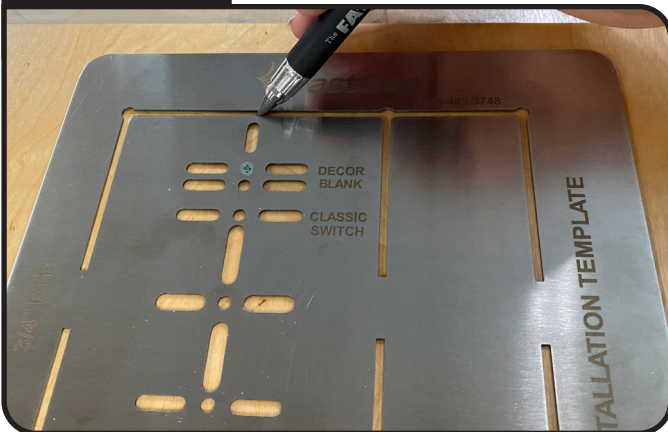
SCREW JIG TO PART WITH SCREW MARK. USE SQUARE OR TAPE MEASURE TO ALIGN JIG. ADD 2ND SCREW TO HOLD JIG IN PLACE.

STEP 4



USING AN OSCILLATING SAW, CUT WITH SQUARE BLADE TO THE OUTSIDE EDGE OF JIG.

STEP 4B



IF YOU USE ANY OTHER TYPE OF SAW, MARK OUTLINE OF JIG

STEP 5



REMOVE JIG AND CUT TABS & INSERT ETR $\frac{3}{4}$ INTO CUT HOLE